

印之明，印出精彩明天！

## 印霸系列 (yinber) 直接制版机

专业印前设备和材料制造商



# 目录 Contents

01

公司简介  
Company Profile

02

组织架构  
Company structure

03

公司荣誉  
Company honor

04

我们的优势  
Our Advantages

05-06

核心技术优势  
Core Technology Advantages

07-08

热敏型直接制版机  
(半自动)  
Semi-Auto CTP  
(Thermal VS UV)

09-10

全自动直接制版机  
(热敏型 VS UV)  
Automatic CTP (Thermal VS UV)

11-12

超大幅面直接制版机  
(热敏型 VS UV)  
Large Format CTP  
(Thermal VS UV)

13-14

柔性直接制版机  
Flexo CTP

15-16

丝网制版机  
CTS

17-18

富彩系列板材  
(热敏型 VS UV)  
FUCAI CTP Plate  
(Thermal VS UV Plate)

19

技术支持  
Customer Service &  
Technical Support

20

多种配套产品  
Other Products



## 公司简介 Company Profile

深圳市印之明科技有限公司是一家集自主研发、制造与销售为一体的国家高新技术企业。在激光调制技术、图像控制技术和平台运动控制技术都有很深的技术积累，公司利用十多年的技术积累和专业的研发团队，开发出了具有自主知识产权的达到国际先进水平的CTCP,CTP,CTS,LDI和光刻设备，在国内外已经销售了几千台。

经过十几年的沉淀，公司出口业务已经覆盖100多个国家和地区。未来，公司将在光刻机，新一代高端新型印刷，PCB设备和半导体制造领域努力打造为领军企业。

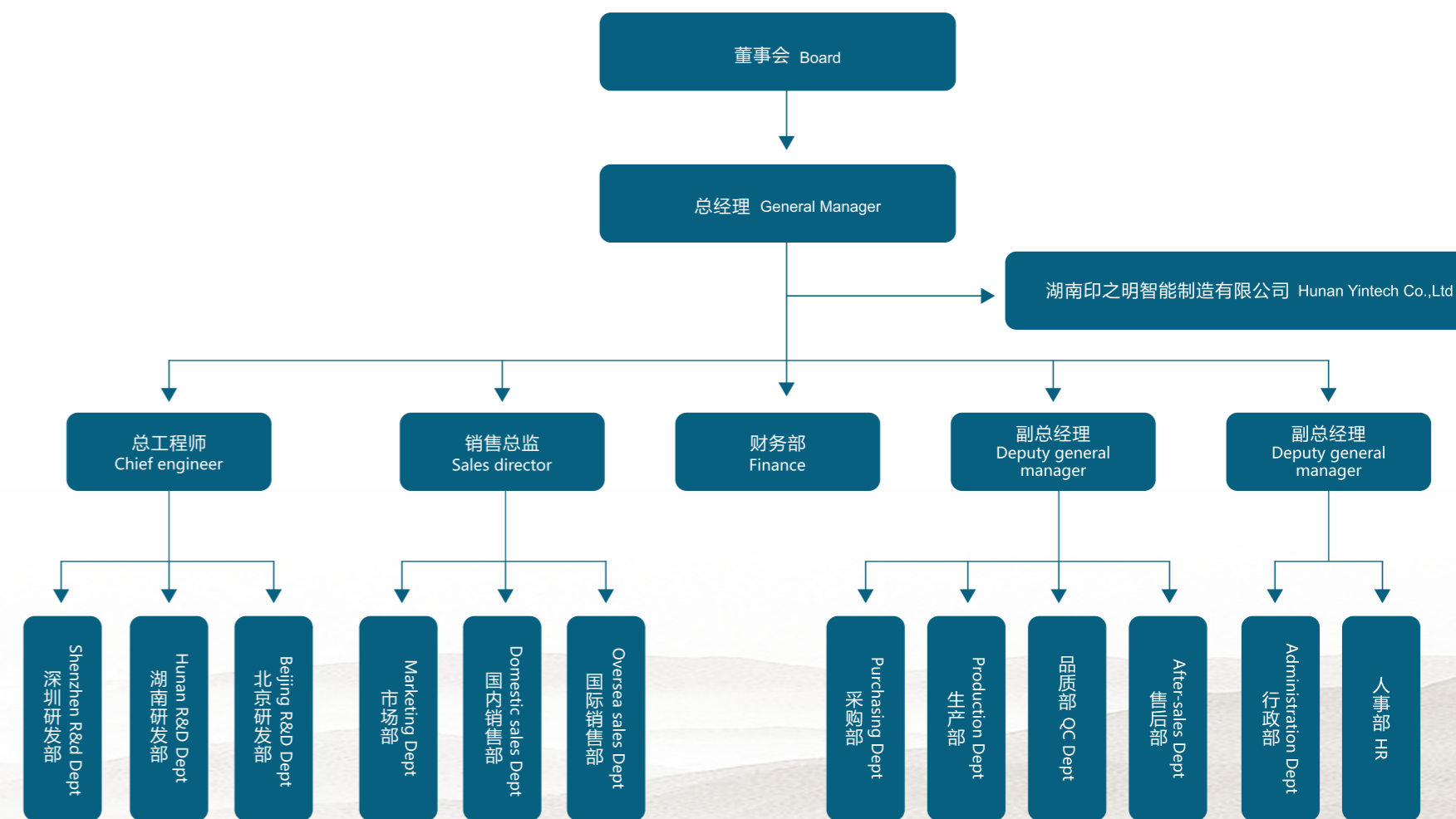
我司实力雄厚，目前已在湖南与政府合资建立了湖南印之明智能制造有限公司，占地30亩，总投资达6亿人民币，主要用来投资生产光刻机、印刷电路板、激光直接成像设备、印刷制版设备及相关配件的技术开发，以及激光制版设备的组装及生产。

Shenzhen Yintech Co., Ltd. is a national high-tech enterprise integrating independent R&D, manufacturing and sales. It has a deep technical accumulation in laser modulation technology, image control technology and platform motion control technology. The company has developed CTCP, CTP, CTS, LDI and photolithography equipment with independent intellectual property rights and reached the international advanced level by using more than ten years of technology accumulation and professional R&D team. It has sold thousands of sets at home and abroad. After more than ten years of precipitation, the company's export business has covered more than 100 countries and regions. In the future, the company will strive to become a leading enterprise in the fields of lithography, new generation of high-end new printing, PCB equipment and semiconductor manufacturing.

Our company has strong strength and established a new company Hunan Yintech Co., Ltd with the government, which covers an area of 30 acres with a total investment of 600 million RMB. It is mainly used to invest in the production of lithography machines, printed circuit boards, laser direct imaging equipment, printing plate-making equipment and related accessories, as well as laser plate-making equipment assembly and production.

## 组织结构

## Company structure



### 公司荣誉

### Company honor

我司获得了国家高新技术企业和深圳市高新技术企业的称号，并且申请了很多专利和软著。

Our company has won the title of National High-tech Enterprise and Shenzhen High-tech Enterprise, and applied for a lot of patents and software copyrights.



### 我们的优势

### Our Advantages

人才是企业的核心价值，印之明秉承“以人为本”的理念，吸收和培养了大批人才，建立了一支高效研发团队，并且加强了与国外技术合作，使产品的多项技术处于国际领先地位。

印之明产品的零配件都是采用了国际顶级零配件供应商，确保了产品的稳定性和使用寿命。

印之明做到“客户至上”的服务理念，建立了一个强大的服务团队，采用7X24小时服务体制，并且服务网点遍布全球。

印之明公司根据客户的需求，量身打造个性产品，为客户节省了成本，并且采用了灵活的销售模式，为客户节约了资金成本。

Talents are the core value of enterprises. Yintech adheres to the concept of "people-oriented", absorbs and trains a large number of talents, establishes an efficient R&D team, and strengthens technical cooperation with foreign countries, so that many technologies of products are in the leading position in the world.

Yintech spare parts all adopt the top international supplier of spare parts, which ensures the stability and service life of the products.

Yintech achieves the service concept of "customer first", establishes a strong service team, adopts 7X24-hour service system, and service outlets are all over the world.

Shenzhen Yintech Co.,Ltd tailored its personalized products to meet the needs of customers, saving customers' costs, and adopted a flexible sales model, saving customers' capital costs.

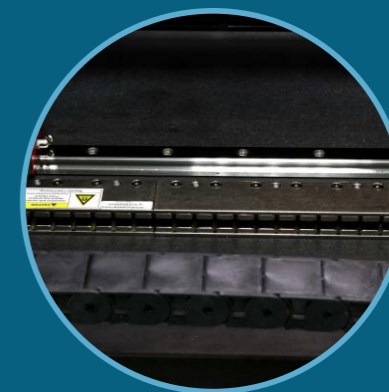


## 核心技术优势

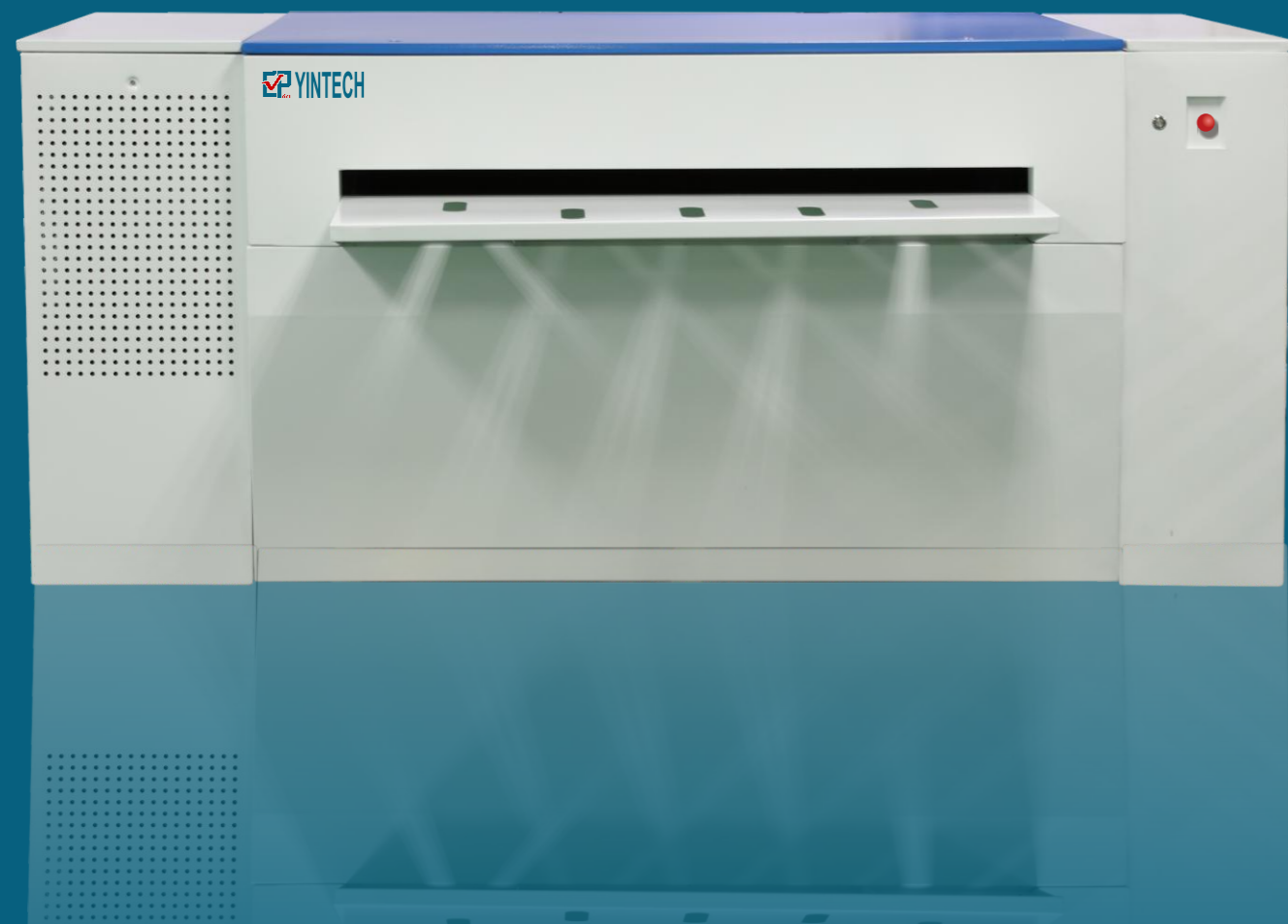
## Core Technology Advantages



- 01** We adopted high power imported laser from Japan and America, so the laser life is longer than others.
- 02** The marble stone working platform ensures that the machine still keeps high precision and high stability under the condition of long working time.
- 03** The overall design of the equipment adopts independent modular design, which facilitates the upgrade, replacement and maintenance of the equipment after.
- 04** Laser diodes are arranged independently and each laser diodes can be upgraded, replaced and maintained one by one after.
- 05** Advanced auto-focus system is adopted, which is suitable for different thickness plates and different brand plates.□
- 06** Our non-linear calibration technology ensures the accuracy of the plate making.
- 07** Remote intelligent diagnosis technology enables engineers to diagnose and maintain machines without leaving home.
- 08** The automatic balance of laser energy technology ensures the consistency of laser spot size, and ensures the uniformity, firmness and delicacy of output dots.
- 09** Unique loading and unloading technology saves plate-making time and improves plate-making efficiency.
- 10** The photoelectric laser positioning technology ensures the high standard registration
- 11** Open 1-bit Tiff workflow interface is applicable to all workflow software.
- 12** Abandoning the traditional lead-screw mode, we adopt the advanced maglev motion control system ensures the accuracy and service life of the machine.



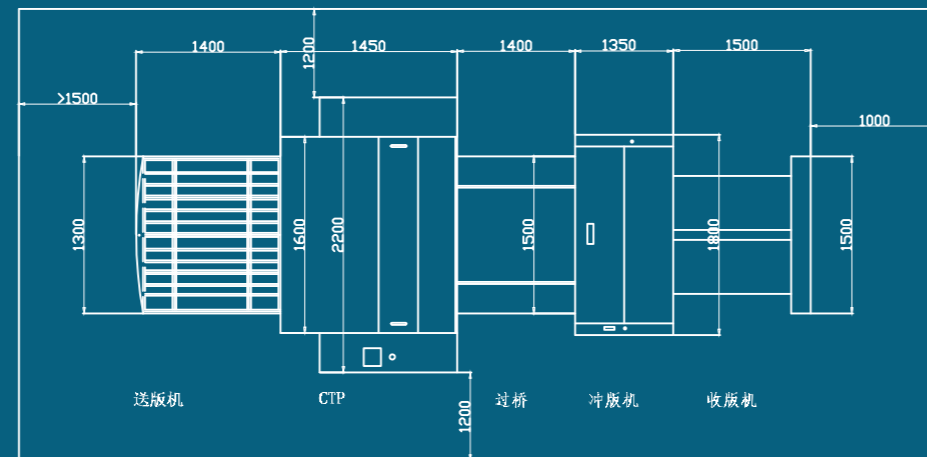
## 半自动直接制版机 (热敏型 VS UV型) Semi-Auto CTP (Thermal VS UV)



### 技术参数 (Technical Specification)

型号 Model	热敏型(Thermal)							UV型(UV)						
	印霸 8300A Yinber 8300A	印霸 8500A Yinber 8500A	印霸 8600A Yinber 8600A	印霸 8900A Yinber 8900A	印霸 8100A Yinber 8100A	印霸 4300A Yinber 4300A	印霸 4500A Yinber 4500A	印霸 5300A Yinber 5300A	印霸 5500A Yinber 5500A	印霸 9300A Yinber 9300A	印霸 9500A Yinber 9500A	印霸 9600A Yinber 9600A	印霸 9900A Yinber 9900A	印霸 9100A Yinber 9100A
激光路数 NO. of Lasers	32	48	64	96	128	32	48	32	48	32	48	64	96	128
制版速度 Throughput(1130x800mm) (张/小时,plates/h)	17	22	27	33	43	22	30	22	30	17	22	27	33	43
最大/最小幅面 Max./Min. Format	最大幅面(Max.): 1160mmx 940mm 最小幅面(Min.): 350mmx 400mm							最大幅面(Max.): 925mmx 675mm 最小幅面(Min.): 350mmx 400mm		最大幅面(Max.): 1160mmx 940mm 最小幅面(Min.): 350mmx 400mm				
激光光源 Laser Source	830nm							405nm						
制版精度 Resolution	2400DPI 其他精度可定制 (Resolution can be customized)													
上、下版方式 Loading System	全自动、半自动(可选配自动上版器) Automatic、Semi-Auto(Optional Auto-loader)													
适用版材 Plates Requirement	0.15-0.4mm 各品牌热敏版 (Thermal plates, no brand requirement)							0.15-0.4mm 各品牌UV版 (UV plates, no brand requirement)						
CTP接口 Interface	1-bit Tiff接口以及流程直接驱动,支持CIP3/CIP4 1-bit Tiff interface and direct workflow driver, support CIP3/CIP4													
电力要求 Power	AC220V, 50-60Hz 5.5KVA													
工作环境要求 Work Environment	温度(Temperature): 20-25°C 湿度(Humidity): 40%-80%													
尺寸、重量 Size &Weight	尺寸(size): 2020mmx1000mmx930mm 净重(weight): 1500KGS					尺寸(size): 1900mmx1200mmx1000mm 净重(weight): 1300KGS			尺寸(size): 2020mmx1000mmx930mm 净重(weight): 1500KGS					

## 全自动直接制版机 (热敏型 VS UV型) Automatic CTP (Thermal VS UV)



### 技术参数 (Technical Specification)

型号 Model	热敏型(Thermal)						UV型(UV)							
	印霸 8300B Yinber 8300B	印霸 8500B Yinber 8500B	印霸 8600B Yinber 8600B	印霸 8900B Yinber 8900B	印霸 8100B Yinber 8100B	印霸 4300B Yinber 4300B	印霸 4500B Yinber 4500B	印霸 5300B Yinber 5300B	印霸 5500B Yinber 5500B	印霸 9300B Yinber 9300B	印霸 9500B Yinber 9500B	印霸 9600B Yinber 9600B	印霸 9900B Yinber 9900B	印霸 9100B Yinber 9100B
激光路数 NO. of Lasers	32	48	64	96	128	32	48	32	48	32	48	64	96	128
制版速度 Throughput(1130x800mm) (张/小时,plates/h)	17	22	27	33	43	22	30	22	30	17	22	27	33	43
最大/最小幅面 Max./Min. Format	最大幅面(Max.): 1160mmx 940mm 最小幅面(Min.): 350mmx 400mm						最大幅面(Max.): 925mmx 675mm 最小幅面(Min.): 350mmx 400mm		最大幅面(Max.): 1160mmx 940mm 最小幅面(Min.): 350mmx 400mm					
激光光源 Laser Source	830nm						405nm							
制版精度 Resolution	2400DPI 其他精度可定制 (Resolution can be customized)													
上、下版方式 Loading System	全自动、半自动(可选配自动上版器) Automatic、Semi-Auto(Optional Auto-loader)													
适用版材 Plates Requirement	0.15-0.4mm 各品牌热敏版 (Thermal plates, no brand requirement)						0.15-0.4mm 各品牌UV版 (UV plates, no brand requirement)							
CTP接口 Interface	1-bit Tiff接口以及流程直接驱动,支持CIP3/CIP4 1-bit Tiff interface and direct workflow driver, support CIP3/CIP4													
电力要求 Power	AC220V, 50-60Hz 5.5KVA													
工作环境要求 Work Environment	温度(Temperature): 20-25°C 湿度(Humidity): 40%-80%													
尺寸、重量 Size & Weight	尺寸(size): 2020mmx1000mmx930mm 净重(weight): 1500KGS					尺寸(size): 1900mmx1200mmx1000mm 净重(weight): 1300KGS			尺寸(size): 2020mmx1000mmx930mm 净重(weight): 1500KGS					

## 超大幅面直接制版机 (热敏型 VS UV型) Large Format CTP (Thermal VS UV)



### 技术参数 (Technical Specification)

型号 Model	热敏型(Thermal)								UV型(UV)							
	印霸 2200 Yinber 2200		印霸 2300 Yinber 2300		印霸 2900 Yinber 2900		印霸 2100 Yinber 2100		印霸 2200U Yinber 2200U		印霸 2300U Yinber 2300U		印霸 2900U Yinber 2900U		印霸 2100U Yinber 2100U	
激光路数 NO. of Lasers	48		64		96		128		48		64		96		128	
制版速度 Throughput(1130x800mm) (张/小时,plates/h)	13	12	17	14	24	20	30	25	13	12	17	14	24	20	30	25
最大/最小幅面 Max./Min. Format	1180x1460 508x394	1460x1650 508x394	1180x1460 508x394	1460x1650 508x394	1180x1460 508x394	1460x1650 508x394	1180x1460 508x394	1460x1650 508x394	1180x1460 508x394	1460x1650 508x394	1180x1460 508x394	1460x1650 508x394	1180x1460 508x394	1460x1650 508x394	1180x1460 508x394	1460x1650 508x394
激光光源 Laser Source	830nm								405nm							
制版精度 Resolution	2400DPI 其他精度可定制 (Resolution can be customized)															
上、下版方式 Loading System	手动、全自动、半自动 Manual、Automatic、Semi-Auto															
适用版材 Plates Requirement	0.15-0.4mm 各品牌热敏版 (Thermal plates, no brand requirement)								0.15-0.4mm 各品牌UV版 (UV plates, no brand requirement)							
CTP接口 Interface	1-bit Tiff接口以及流程直接驱动,支持CIP3/CIP4 1-bit Tiff interface and direct workflow driver, support CIP3/CIP4															
电力要求 Power	AC220V, 50-60Hz 5.5KVA															
工作环境要求 Work Environment	温度(Temperature): 20-25°C 湿度(Humidity): 40%-80%															
尺寸、重量 Size & Weight	尺寸(size): 2880mmx1310mmx1310mm 净重(weight): 2800KG															



## 柔性直接制版机 Flexo CTP



### 技术参数 (Technical Specification)

型号 Model	HDI600S	HDI600F
激光路数 NO. of Lasers	16	32
制版速度 Throughput (平米/小时, m2/hour)	1.25m <sup>2</sup> /hour	2.50m <sup>2</sup> /hour
常用/最大/最小幅面 Com/Max./Min. Format	常用幅面(Common): 610mmx 510mm 最大幅面(Max.): 660mmx 560mm 最小幅面(Min.): 100mmx 160mm	
激光光源 Laser Source	830nm	
制版精度 Resolution	4000dpi	
上、下版方式 Loading System	手动进版 Manual loading	
适用版材 Plates Requirement	厚度(thickness): 0.14-3.94mm 数码柔印版、聚脂基凸版、烧蚀型菲林 (Digital flexographic plate, photopolymer plate, ablative film)	
CTP接口 Interface	1-bit Tiff接口以及流程直接驱动,支持CIP3/CIP4 1-bit Tiff interface and direct workflow driver, support CIP3/CIP4	
电力要求 Power	单相交流(single phase): AC22V±5%, 50-60Hz 5.5KVA 含真空泵及除尘泵 (including vacuum pump and dust pump)	
工作环境要求 Work Environment	温度(Temperature): 18-25°C 湿度(Humidity): 20%-70% 无结露(No condensation)	
尺寸、重量 Size &Weight	尺寸(size): 1630*1170*965mm (W*D*H) 重量(Weight): 900KGS	

## 丝网制版机 CTS



### 技术参数 (Technical Specification)

型号 Model	CTS-1211U	CTS-1211H
最大网框 Max screen frame	1200mmx 1100mm	
最小网框 Min screen frame	200mmx 200mm	
网框厚度 Screen frame thickness	20mm-40mm	
最大成像尺寸 Max image size	1100mmx 1000mm	
最小线宽/线距 Min line width/space	75μm/75μm	50μm/50μm
资料解析度 Resolution	12700DPI	25400DPI
边缘粗糙度 Margin Roughness	±10%	
曝光方式 Exposure Mode	DMD+LD	
对焦方式 Focus mode	实时主动对焦 Real-time auto-focus	
激光功率 Laser power	15W	
波长 Wavelength	405nm	
扫描速度依据感光胶剂量及胶厚而异 Scanning speed	210s	300s
重复精度 Repeatability	<±5μm	<±2μm
上料方式 Loading system	手动 Manual	
机台尺寸 Size	2150mm (L) x 2180mm (W) x1600mm (H)	
机台重量 Weight	3000KG	
工作环境 Work environment	电源(Power):380V±5%, 50/60Hz, 4KW	
	温度(temperature): 22±4°C	
	湿度(Humidity): 50±10%	
	洁净度(Purity): 10,000 Level	

## 板材 ctp/ctcp plate



### 技术参数 (Technical Specification)

产品类型 Products Type	热敏阳版(FP-100) Positive Thermal CTP Plates	UV版(FP-200) UV CTCP Plates
耐印率 Run Length	50,000-100,000 impressions unbaked, ≥100,000 impressions baked	≥100,000 impressions
厚度 Thickness	0.27mm, 0.15mm	0.27mm, 0.15mm
光谱灵敏度 Spectral sensitivity	830nm	405nm
激光能量 Laser energy required	110-150mj/cm <sup>2</sup>	50-70mj/cm <sup>2</sup>
分辨率 Resolution	1%-99%@200LPI	
烤版条件 Baking condition	230°C-250°C, 5-8分钟(使用专业烤版胶)	230°C-250°C, 5-8 minutes(by using professional baking glue)
安全灯光 Safelight	2小时日光灯, 12小时黄灯 2 hours under fluorescent lamp, 12 hours under yellow light	
储存方式 Storage condition	储存在干燥处, 温度在5°C-30°C, 湿度<55% Store in dry and cool place, store in 5°C-30°C, humidity <55%	
保质期 Shelf Life	12个月 12 months	
显影时长 Developing time	20-30 secs	
生产能力 Productivity	1800-1500万平米/年 18-25 million m <sup>2</sup> per Year	

技术支持

Customer Service & Technical Support



- 设备安装调试  
equipment installation& training
- 软件安装及培训  
software installation& training
- 板材测试及运用培训  
plate test& production training
- 测试仪器使用培训  
test instrument use training
- 核心部件提供超长质保  
longer warranty for core components
- 已设立华东、北方、西南、华南及海外服务中心  
set four service centers in China &other  
oversea service center.
- 驻点工程师服务24小时响应  
24 hours customer service
- 专家团队远程技术诊断支持  
Professional technical team remote diagnosis support
- 高性价比的服务配件供应  
cost-effective spare parts supply



Hotline  
服务电话

**+86 4008-3232-01**

多种配套产品

Other Products

